

COMMUNICATING ARCHITECTURE AND DESIGN

Indian
Architect
& Builder

YEAR BOOK



2001

It's all about Indya
diverse

 **Jasubhai**
PUBLICATIONS

Free for all IA&B Subscribers

News Stand Price: Rs 500/-



7. In the main reception area, a dramatic curvilinear sweep of wall with niches leads the viewer into the interior space.

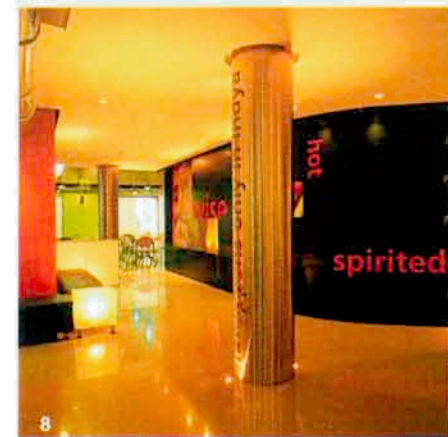
Indya.com, one of the popular websites in India and also Indya.com one of the largest India related portals on the web, is the Microland Group's new Global Internet Venture. It is an India-related portal that allows the visitor access to a diverse range of information ranging from politics to Bollywood, from astrology to music. The office that was designed is located in Bangalore in an existing four-storey building that has been totally restructured and renovated from within.

The brief to the designers was simple – the office had to have an open, interactive, bright and cheerful environment for the offices. Sandeep pipes in, "The concept of the offices was 'Indian with an Attitude'. Our thoughts on the look of the office was that it should be open, bright, interactive, young, smart, fun yet refined. It should exude an innate Indian-ness while being high-tech and contemporary." The requirement was to provide clusters of interactive workstations with 4' partitions in the main work areas, and cabins for VP's at the periphery of each floor. One floor would be dedicated to the reception area, open meeting areas, a library for people to sit and browse, chat rooms, a large conference room and smaller meeting rooms. Also part of the brief were areas of recreation, a gymnasium, showers and lockers, bunk beds for the staff to be able to sleep overnight. A large cafeteria was to be provided on the terrace - a space for people to eat, interact with each other and take a break from sitting on a workstation.

There were two restraints in the project that the design team had to work around. The first was that there a certain number of people had to be accommodated within a specified floor. On an average, they were required to fit in 90 persons per floor (4500sq ft) including space for cabins, foyer area and a meeting room. The second constraint was the restricted ceiling height, with numerous beams, with the beam bottom being at 8'-6". The challenge was to fit in the number of people, the mechanical and electrical systems without losing the feeling of openness and light. To overcome these constraints, it was

decided to first paint the ceiling black - therefore the attention to the clutter of beams was taken away. Then a suspended lighting system was designed, while simultaneously keeping the air-conditioning with spiral ducting exposed. The systems became part of the tech-feel of the office. Glass doors and glass partitions were used to divide the cabins from the workstation areas, thus still admitting an ample amount of natural light into the main work area.

In the main reception area, a dramatic curvilinear sweep of wall with niches leads the viewer into the interior space. White cedar veneer, brushed steel and frosted glass is offsetted by use of grey granamite. Set into the niches are larger-than-life graphics, with bold floating words on the wall, that describe the images as well as the site. The warm, saturated street images provide for an interesting contrast to the minimal, slick visual vocabulary of the space - brushed steel columns, lit frosted glass cube tables, and low black leather seating.



Fact File

Project	: Indya.com Portals Pvt Ltd Headquarters
Location	: Bangalore
Client	: Indya.com Portals Pvt Ltd
Architects	: Khosla Associates
Graphic Designers	: Singh Khosla Design
Principal Architect	: Sandeep Khosla
Associate Architects	: Amaresh Anand, Anshul Chodha
Design Team	: Sandeep Khosla, Amaresh Anand, Anshul Chodha, Rajesh Kumar.
Address	: #18, 17th Main, HAL 2nd A Stage, Indiranagar, Bangalore 560 008; Tel: 5278186; Fax: 529495; Email: khoslas@bgl.vsnl.net.in
Principal Graphic Designer:	: Tania Singh Khosla
Graphic Design Team	: Tania Singh Khosla, Shruti Sanganeria, Aditi Phukan
Project Area	: 22,000 sq ft
Civil and Carpentry	
Contractors	: Mona Lisa Interiors Pvt Ltd
Electrical Consultants	: Meca Engineers
Electrical Contractors	: Frontier Business Systems Pvt Ltd
Air-conditioning	
Contractors	: Magna Cool Enterprises Pvt Ltd
Project Estimate	: 2.5 crore
Initiation of Project	: April 2000
Completion of Project	: January 2000

8&9. Human, everyday images were juxtaposed with chosen words that, on one hand gave the image a whole new interpretation, and on the other hand described the site.

10. Black ceiling is offsetted by bright 'Indian' colours like jamun and orange.



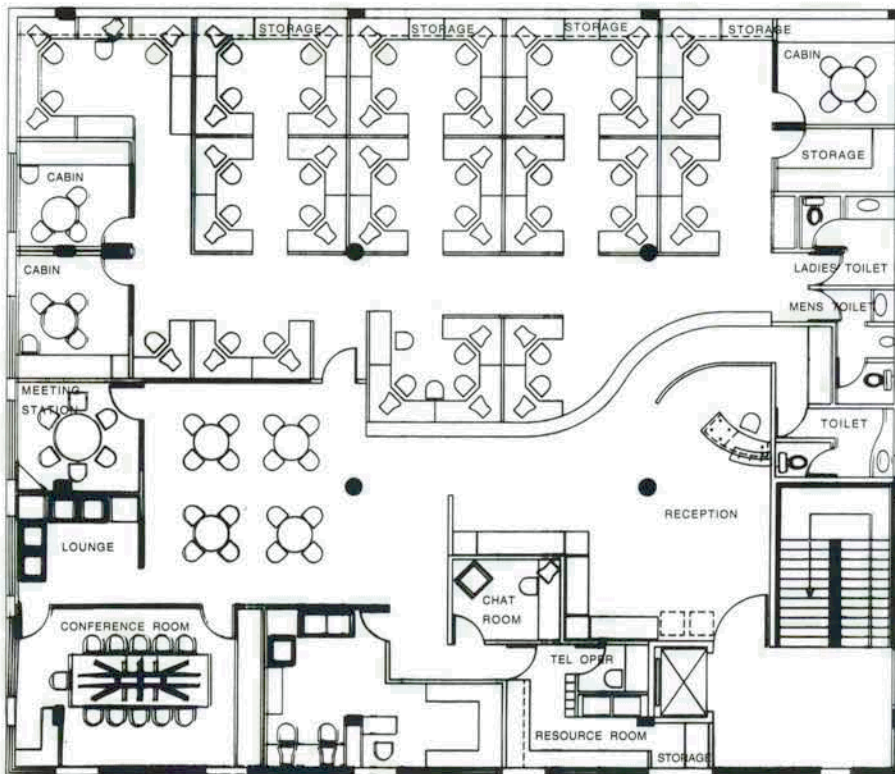


11. The warm tones of the wood are contrasted by the colours on the columns and the images on the walls.

12. Industrial pendant light domes spun in aluminium and light fixtures in mild steel and brushed stainless steel and acrylic add texture to the design within the workspaces.

Beechwood laminate with silver trims define the workstations, surfaces and storage, while the meeting, discussion and conference tables are dressed in silver vapour-cured mild steel, brushed stainless steel and glass. Industrial pendant light domes spun in aluminium and light fixtures in mild steel and brushed stainless steel and acrylic add texture to the design. The flooring for the main work areas is kept simple with a gray stud vinyl flooring, while cabins, meeting and conference rooms are treated with beechwood laminate, and black granite in the foyer of each floor. Colours have been added to get in the Indianness of the office. So while, columns and certain walls are painted in rich, saturated hues of Indian purple (more aptly described in Hindi as 'jamun') and blue-green, flaming saffron/orange, others areas are washed with a contemporary acidic lime green, with accents of red to recall the house colour of Indya.com.

The thought process in this office was a collaborative effort between the architects and graphic designers. "The idea was to capture the attitude and the content of Indya.com but in an unexpected and intelligent way that would make the viewer smile. We wanted the forms, materials, textures, colour palette and graphics to all be unified. The colour and imagery of the urban Indian streetscape inspired the images that were shot and carefully composed. These human, everyday images were juxtaposed with chosen words that, on one hand gave the image a whole new interpretation, and on the other hand described the site. For example, two young girls dressed in rich purples and blue/greens, their hair braided with fresh 'mallipu' (jasmynes) set against a warm orange backdrop, giggling and whispering into each others ear - an image that makes the viewer smile.", enthuses Sandeep. ■



FIRST FLOOR PLAN